
DSP Card Installation & Operation Guide

Advanced Real Time Display Card Application

Description

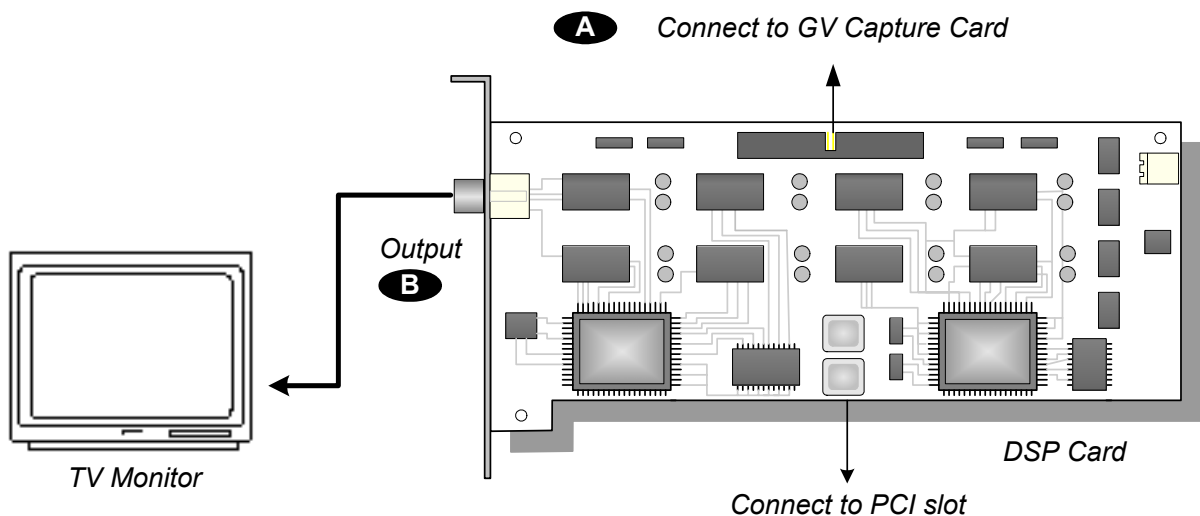
The DSP application is designed to display real-time video on a TV or security monitor. With the DSP application, you can view live video from either 8 cameras or 16 cameras at up to 480 fps, as well as choosing display cameras and split screen mode.

The following precautions must be taken before installing a DSP card:

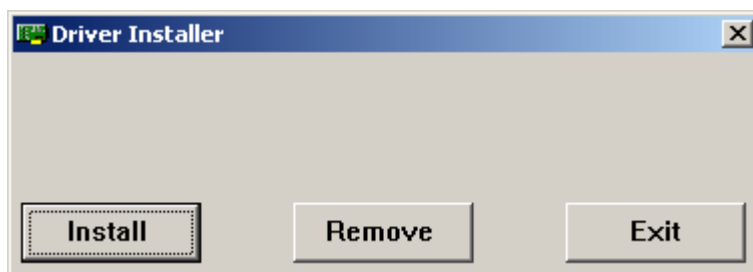
- The DSP card does not support VIA chipset motherboards.
- The DSP card requires a minimum GeForce 2 MX200 VGA card.

Installation & Operation

1. Manually delete **GVDSPG1.dll** (for 16-port system) or **GVDSPG2.dll** (for 8-port system) from the GV system folder.
2. Install the DSP card as the illustrated below.
 - A. Use the supplied ribbon cable to connect the DSP card to the GV capture card.
 - B. Use the RCA cable to connect the DSP card output to TV monitor.

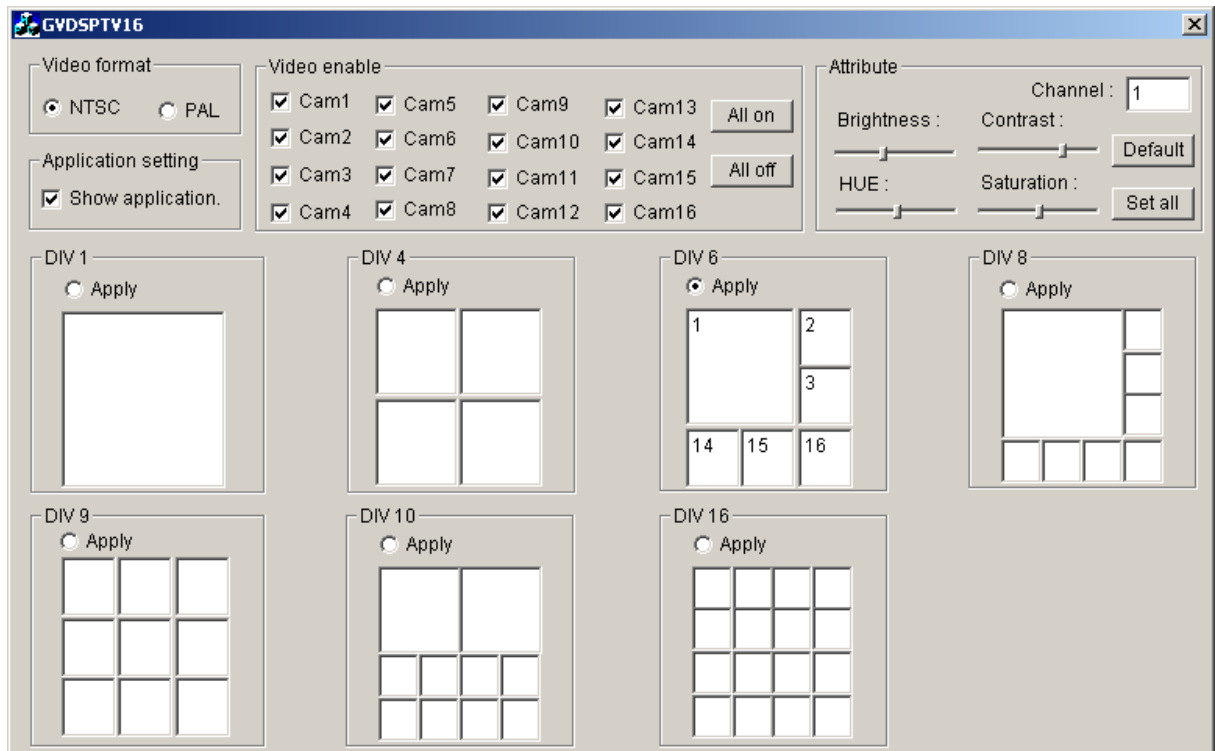


3. Turn on your PC and start Windows.
4. The Windows Hardware Wizard detects this newly installed card and appears. Ignore the wizard window and keep on the following steps.
5. Execute **DrvInst.exe** from the supplied CD-ROM under **Driver** folder. This dialog box appears.



6. Click **Install** to install the driver. When the installation is done, the message will appear: *Install Successfully*.
7. Click **Exit** to close the dialog box.

8. Copy the **DSP 16port** or **DSP 8port** folder from CD-ROM:\GVDSP TV-OUT AP to the hard disk. Make sure to keep the DSP port folder separately from the GV system folder.
9. Execute **GVDSPTV16.exe** or **GVDSPTV8.exe** from the DSP 16port or DSP 8port folder.
10. Suppose you execute GVDSPTV16.exe. You should see this setup window.



- **Video Format:** Select a video standard used in your country.
- **Application Setting:** Enable to display the setup window at next startup.
- **Video enable:** Enable the desired cameras for live display.
- **Attribute:** Enter a channel number and modify video attributes if necessary. To apply the changes to all channels, click the **Set All** button.
- **Static:** Select a split screen mode. If you like to designate display cameras, enter the camera number directly on separate screen divisions. See the above example of DVI6.

Note: If disabling the Application Setting option, at next startup you cannot open the setup window and change any settings. To display the window again, execute **GVDSPTV16.ini** or **GVDSPTV8.ini** and change the **SetParameter** value from 0 to 1. (SetParameter=0 indicates the window is disabled; SetParameter=1 indicates the window is enabled.)

Specifications

Specifications		
Interface	40-pin IDE connector	
TV Output	RCA connector x 1	
Number of Channels	8, 16	
Display Rate	GV-DSP-8	240fps
	GV-DSP-16	480fps
Video Resolution	NTSC	640x480
	PAL	720x576
Compatible Models	GV-250, GV-600, GV-650, GV-800, GV-900, GV-1000	
Dimensions	GV-DSP8: 191mm x 98mm	
	GV-DSP16: 204mm x 100mm	